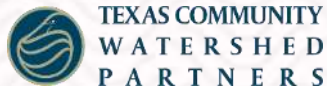


NAI-CHARM Workshop

Willacy, Cameron Counties, TX

Steven Mikulencak, AICP (and team!)
March 24, 2021



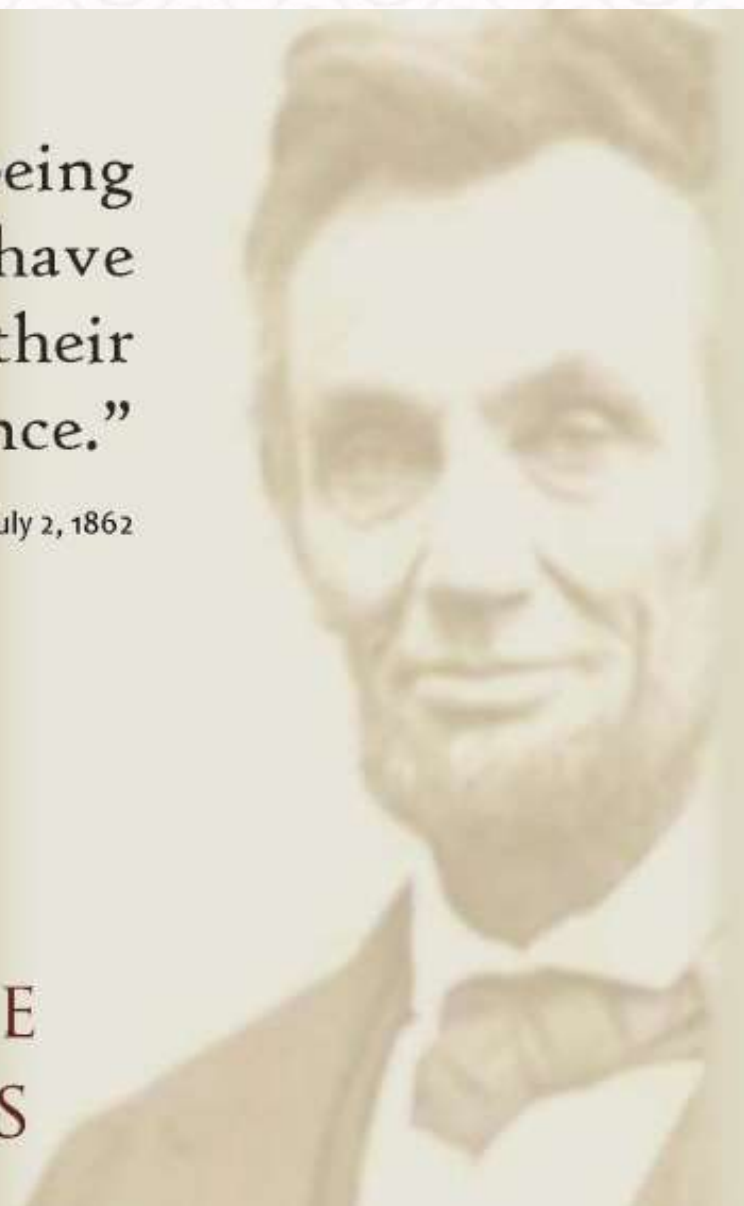
FEMA

“The land grant university system is being built on behalf of the people, who have invested in these public universities their hopes, their support, and their confidence.”

Abraham Lincoln, upon signing the Morrill Act, July 2, 1862

SERVING YOU TODAY

TRUSTED RESEARCH
LOCAL EDUCATORS...
EXTENDING KNOWLEDGE
PROVIDING SOLUTIONS



Texas Community & Watershed Partners (DAR Blue Skies Team)



Steven Mikulencak, AICP
Planning Program Director



Rachel Steele
Program Manager



Charriss York
GIFT Program Director



Christie Taylor
Storm water Wetlands



Amanda Ashcroft, AICP
Planner



Andrew Knuppel, AICP
Planner



Dana Snyder
Planner



Celina Gauthier Lowry
Program Coordinator



Md Reja Yousef
Lead Geospatial Analyst



Sayena Marandi
Geospatial Analyst



Nina Omani
Geospatial Analyst



Erika Pham
Geospatial Analyst



Open Position
Planning Program Coordinator



Madeline Jones
Extension Assistant



Brian Garcia
Graphic Designer



Julie Cain
Program Coordinator

AgriLife Disaster Assistance and Recovery (Gray Skies Team)



Dr. Monty Dozier

Associate Professor / Program Director



Joyce Cavanagh

Associate Professor / Extension Specialist



Brayla Leighton

Business Coordinator



Rachel Bauer

Extension Program Specialist II



Miquela Smith

Extension Program Specialist II



Brandon Boughen

EA-DAR District 1



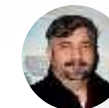
Curtis Preston

EA-DAR District 2



Jason Steinbacher

EA-DAR District 3



Mark LeMense

EA-DAR District 5



Jennifer Reid

EA-DAR District 5



Curtis Martin

EA-DAR District 6



Jeff Fant

EA-DAR District 7



Raylene Pennington

EA-DAR District 8



Asa Jillson

EA-DAR District 9



Merryl Holmes

EA-DAR District 9



Will Stevens

EA-DAR District 9



Matthew Holloway

EA-DAR District 9



Bryan Davis

EA-DAR District 10



Troy Luepke

EA-DAR District 10



Matthew Pfiefer

EA-DAR District 11



Dustin Adair

EA-DAR District 11



Linda Wasserman

EA-DAR District 11



Matthew Rodriguez

EA-DAR District 12



Richard Griffin

EA-DAR District 12

The CHARM Approach to Collaborative Planning

A hand with a ring on the ring finger points at a map displayed on a screen. The screen shows a GIS interface with a menu bar at the top containing 'Selection', 'Geoprocessing', 'Help', and 'Layer:'. The map itself shows a grid pattern and some circular features. The hand is wearing a dark sleeve with a frayed edge.

The

*Wish
You were
Here!*

CHARM TOUR 2021



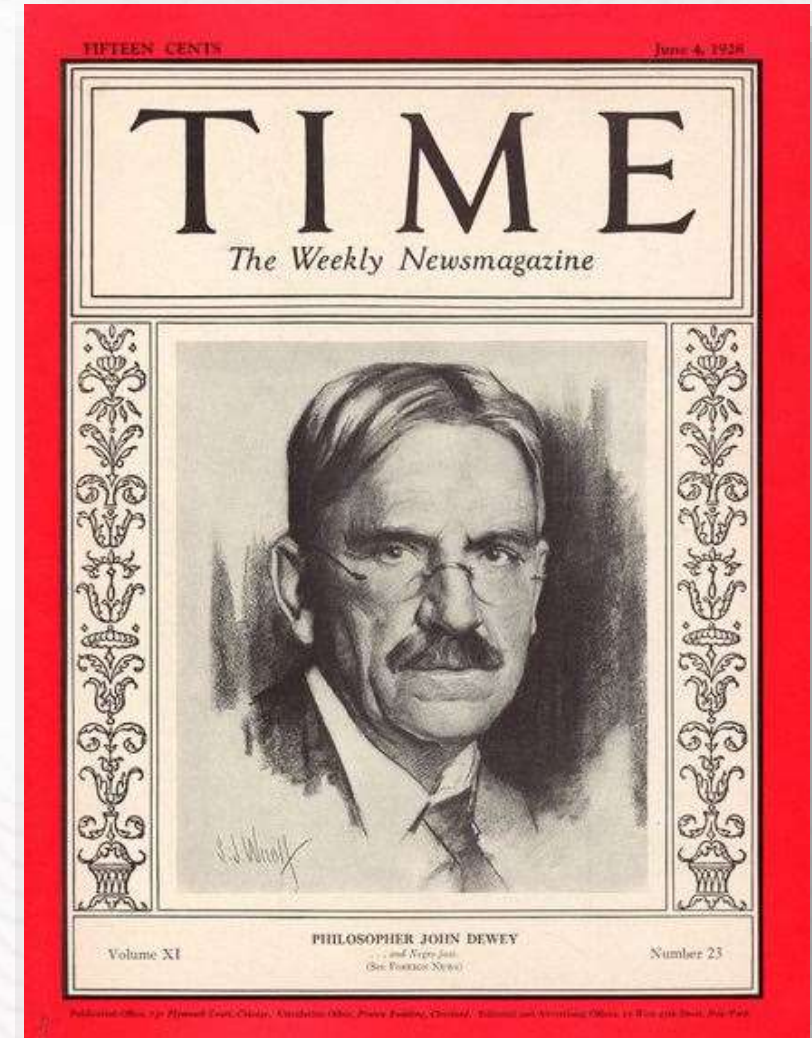
Community Health And Resource Management

The CHARM Approach

“The man who wears the shoe knows best that it pinches and where it pinches, even if the expert shoemaker is the best judge of how the trouble is to be remedied.”

John Dewey

The Public and Its Problems (1927)



The CHARM Approach

The platform was always envisioned as supporting the human dimensions and analytical needs of collaboration and decision-making

Intended for technical and non-technical participants

Push technology to the background and let people work around the table

Engage non-technical participants with live mapping feedback

Allow participants to come to terms with the data in their own words

Bring different viewpoints to the table to work together



ArcGIS & Community Viz
 weTable
 CHARM Data
 CHARM Platform

TEXAS A&M
 AGRILIFE
 EXTENSION

CHARM Platform

The diagram illustrates the components of the CHARM Platform. It features three interconnected blue circles: 'ArcGIS & Community Viz', 'weTable', and 'CHARM Data'. A large blue arrow points from these components down to the text 'CHARM Platform'. The background image shows a group of people in a meeting room, gathered around a large table with a digital display, likely demonstrating the platform's capabilities.

ARC GIS & COMMUNITY VIZ

weTable

CHARM Data

CHARM Platform

TEXAS A&M AGRILIFE EXTENSION

ARC GIS & COMMUNITY VIZ

weTable

CHARM Data

CHARM Platform

TEXAS A&M
AGRI LIFE
EXTENSION

CHARM provides customizable, hyper-local, interactive, data-driven analyses

A group of people are gathered around a large digital screen displaying a map. One person is pointing at the screen, which shows various colored regions representing different land use scenarios.

**Future Land
Use Exercise**

A group of people are gathered around a table, looking at a large map or document. They appear to be in a collaborative discussion, with some pointing at the map.

**Higher
Standards**

A group of people are gathered around a table, looking at a large map or document. They appear to be in a collaborative discussion, with some pointing at the map.

**Riverine & Surge
Flood Loss
Estimates**

A group of people are gathered around a table, looking at a large map or document. They appear to be in a collaborative discussion, with some pointing at the map.

**Critical Facilities
Exercise**

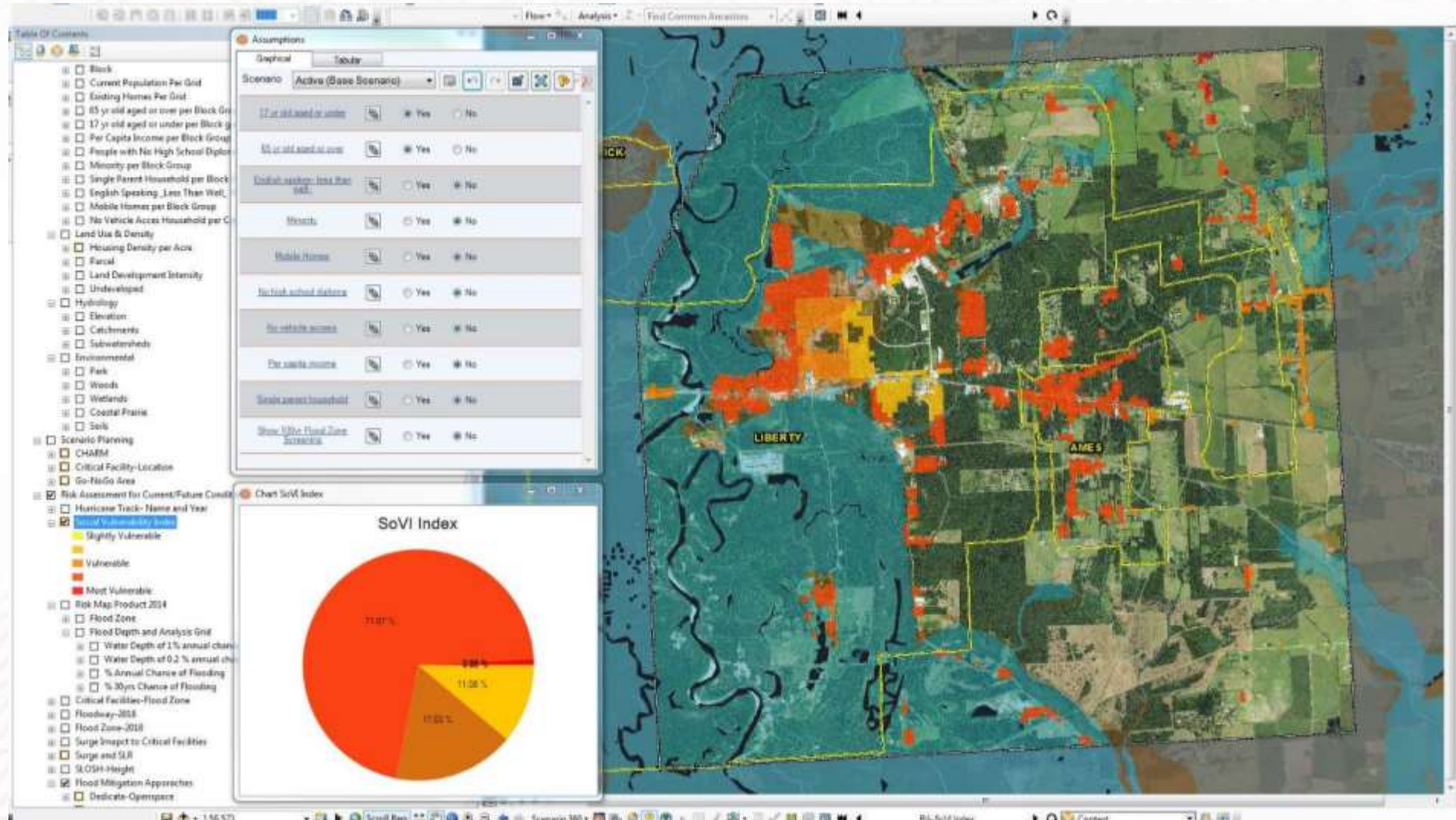
A group of people are gathered around a table, looking at a large map or document. They appear to be in a collaborative discussion, with some pointing at the map.

**Social
Vulnerability
Index**

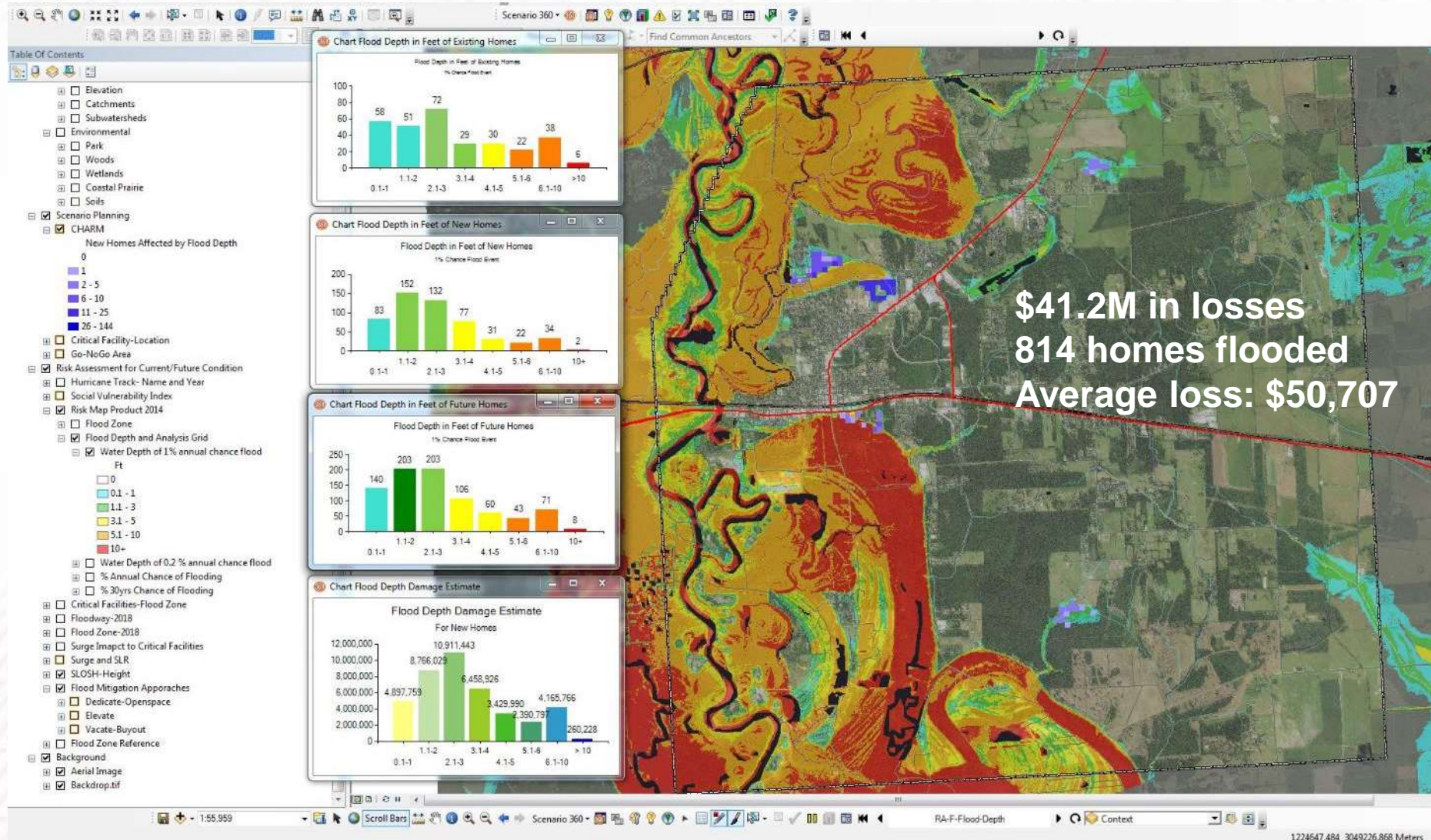
A group of people are gathered around a table, looking at a large map or document. They appear to be in a collaborative discussion, with some pointing at the map.

**Mitigation
Opportunities**

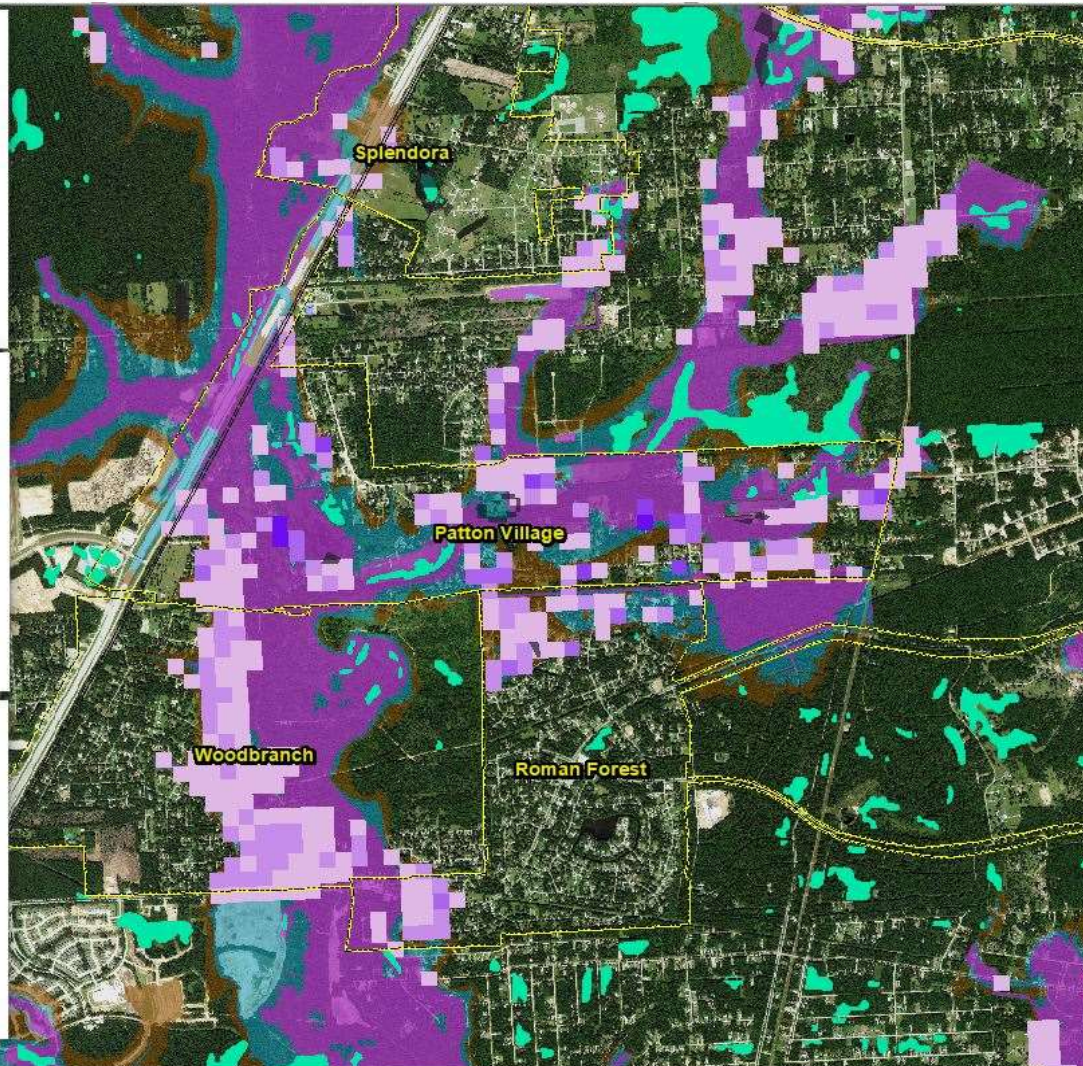
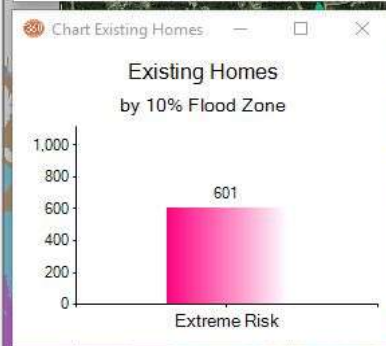
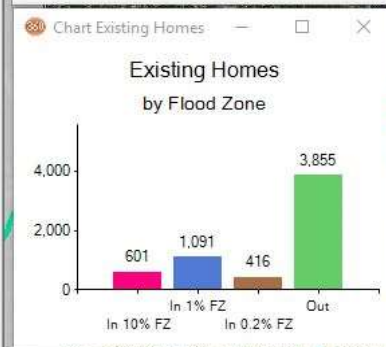
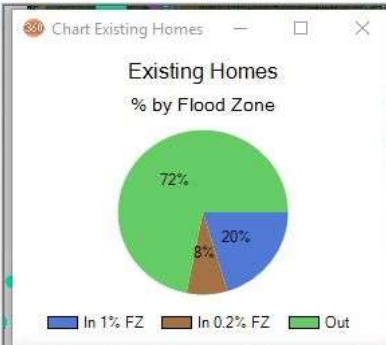
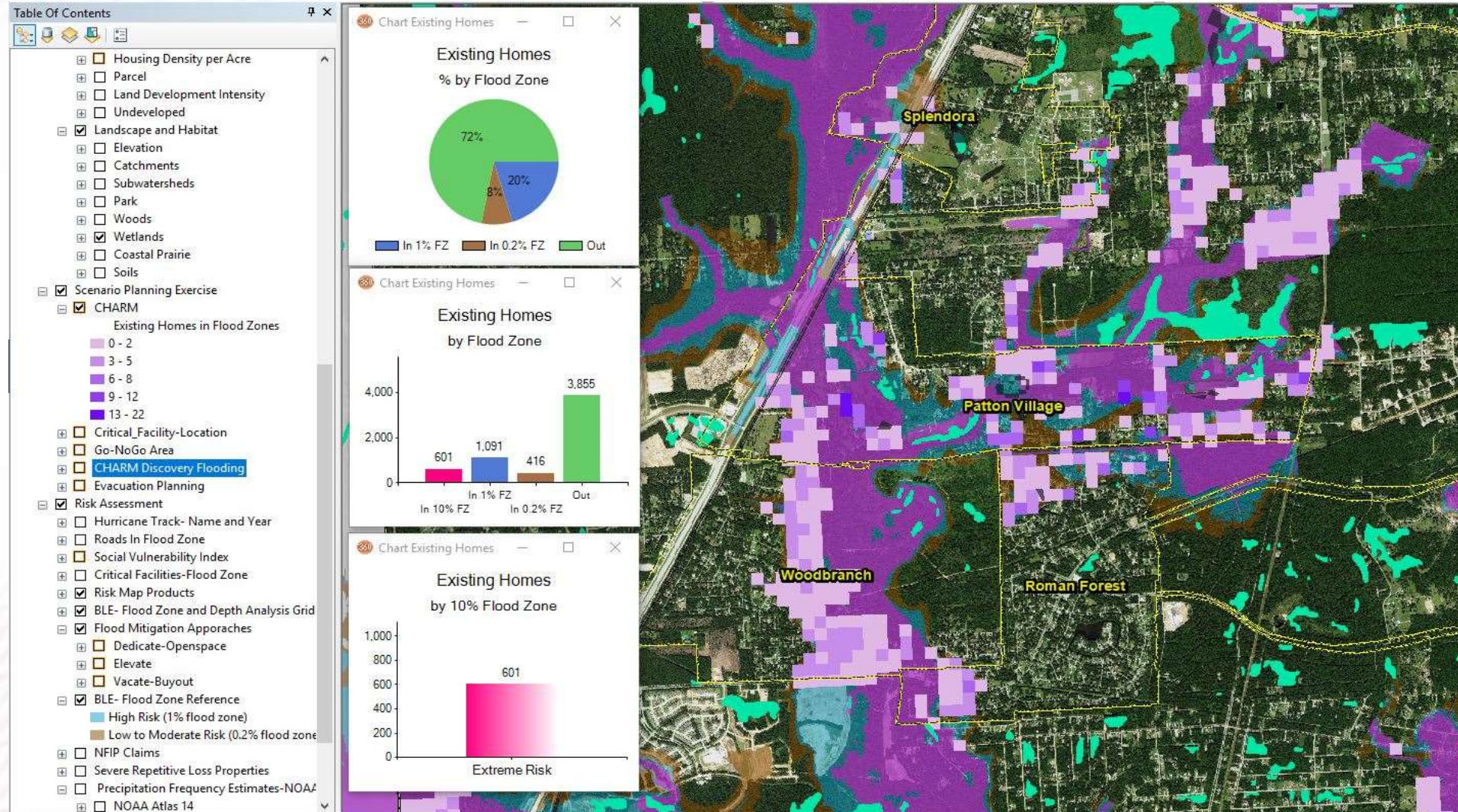
Social Vulnerability



Estimating Losses with BLE



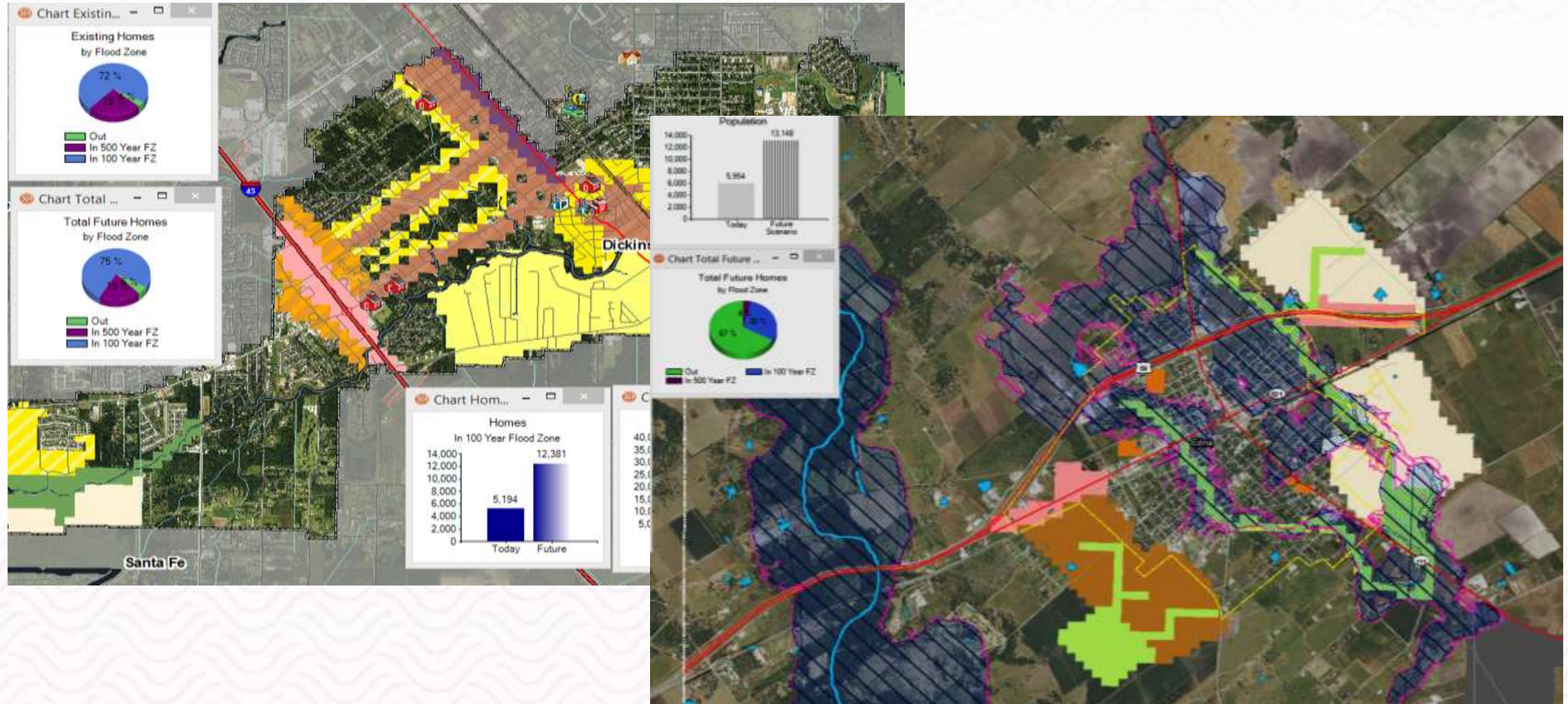
Visualizing Risk & Loss



Identify Mitigation Opportunities



Future Growth & Land Use



















*Wish
You were
Here!*

Goals for today's CHARM exercise

Explore the data, tools, and planning paints

Identify and discuss local issues

- What does the data and your experience suggest is happening?
- What are possible activities that your community could support?
- What additional data or analyses would be helpful?

Think about next steps

- Where could this approach work in your community?
- What would be the first steps?
- Who else needs to be a part of the process?



Time for breakout rooms!

Steven Mikulencak, AICP
smikulencak@tamu.edu
CommunityCHARM.org

